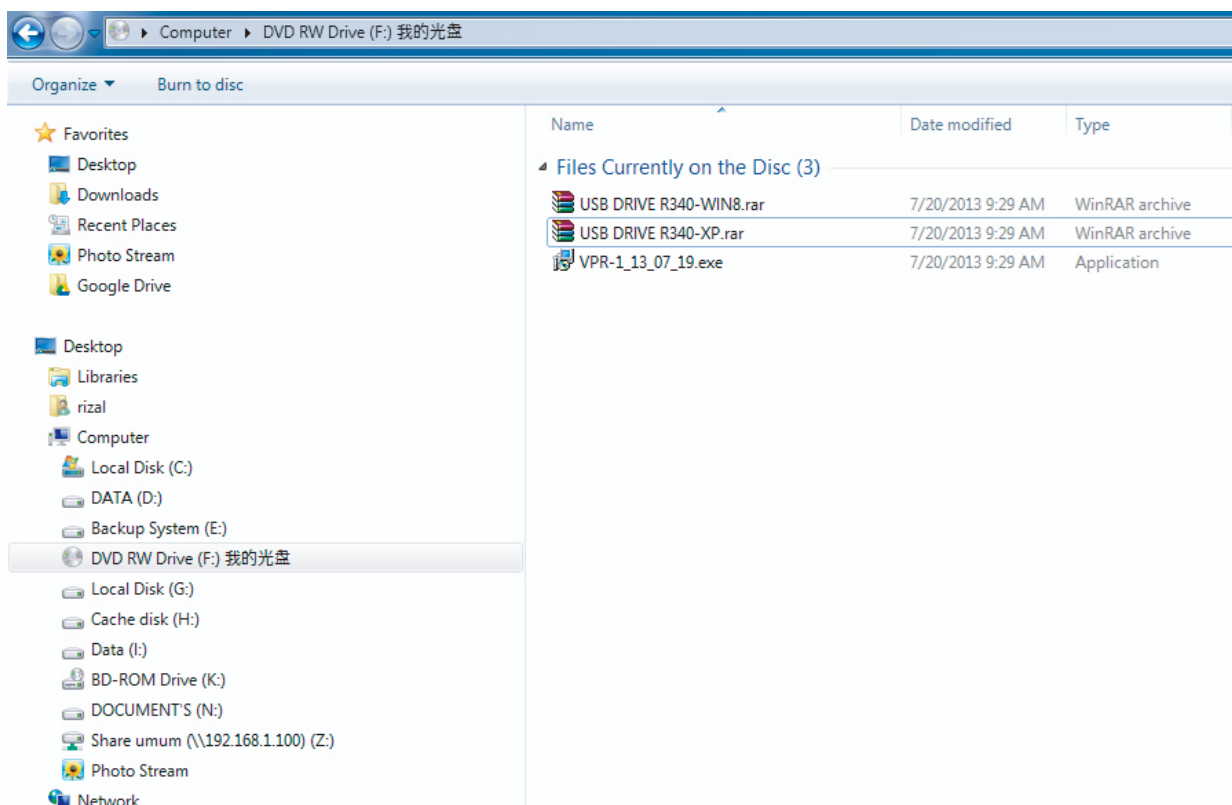


# VPR-1



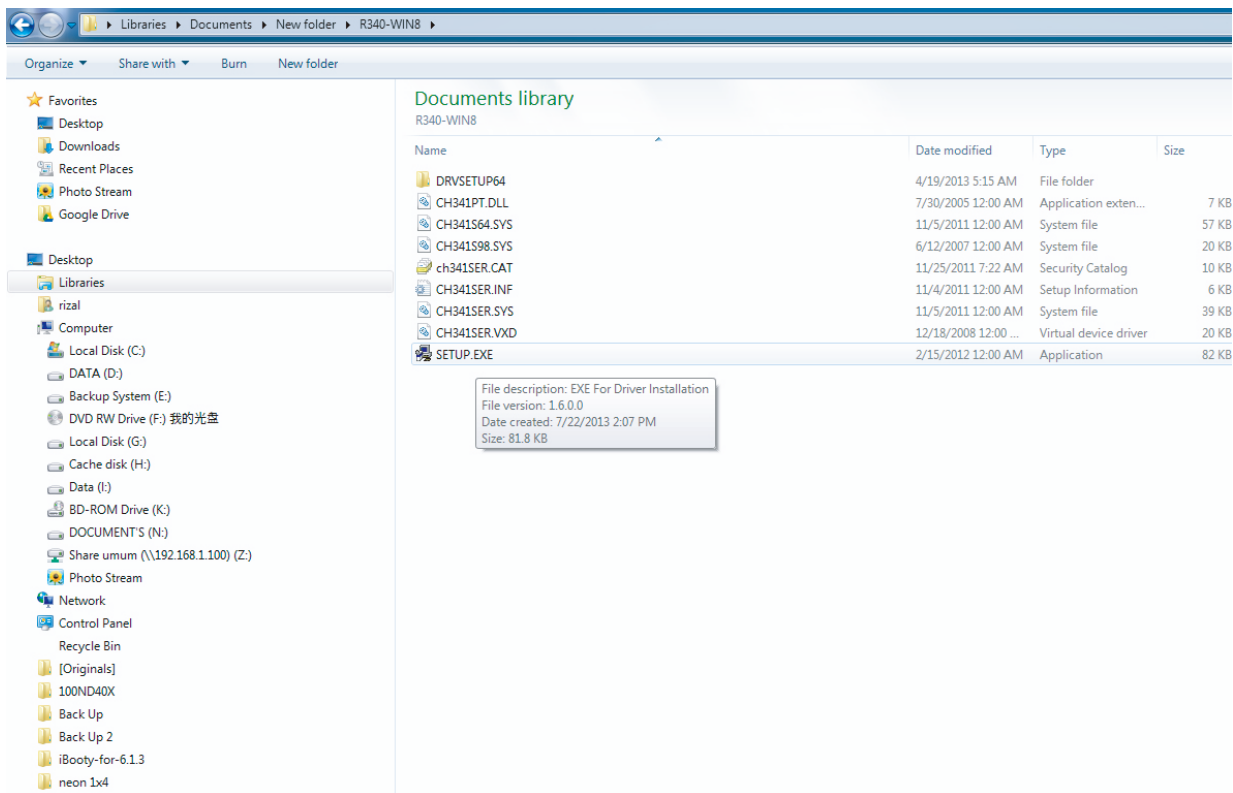
**BUKU PETUNJUK**

  
[www.venom-audio.com](http://www.venom-audio.com)



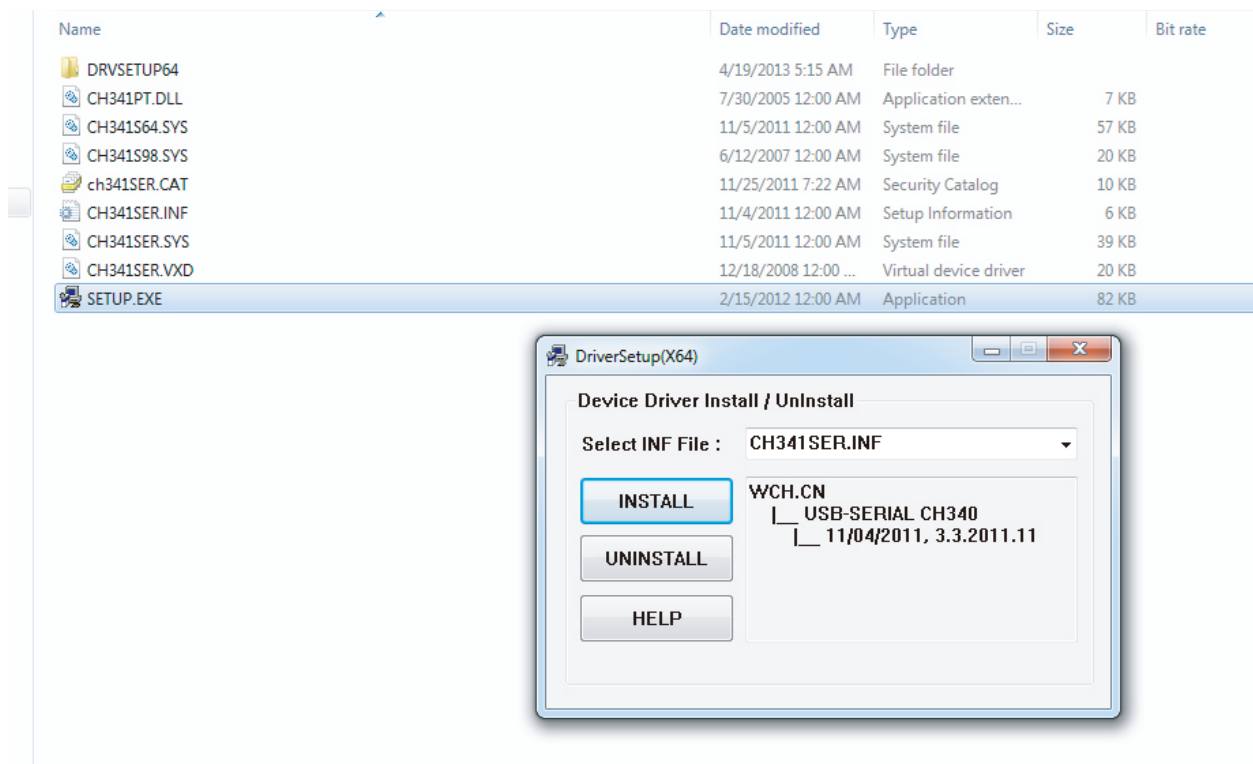
**1. Select Your Windows Capability Its  
A .Rar File, You Should Extract The File**

**1. Pilih Sesuai Dengan Os Windows  
Yang Terinstal Pada Kompuetr Anda,  
Ini Adalah File Rar Anda Perlu Mengex-  
tract File .rar Untuk Melakukan  
Instalasi**



## 2. Double Click To Setup.exe

## 2. Klik Setup.exe



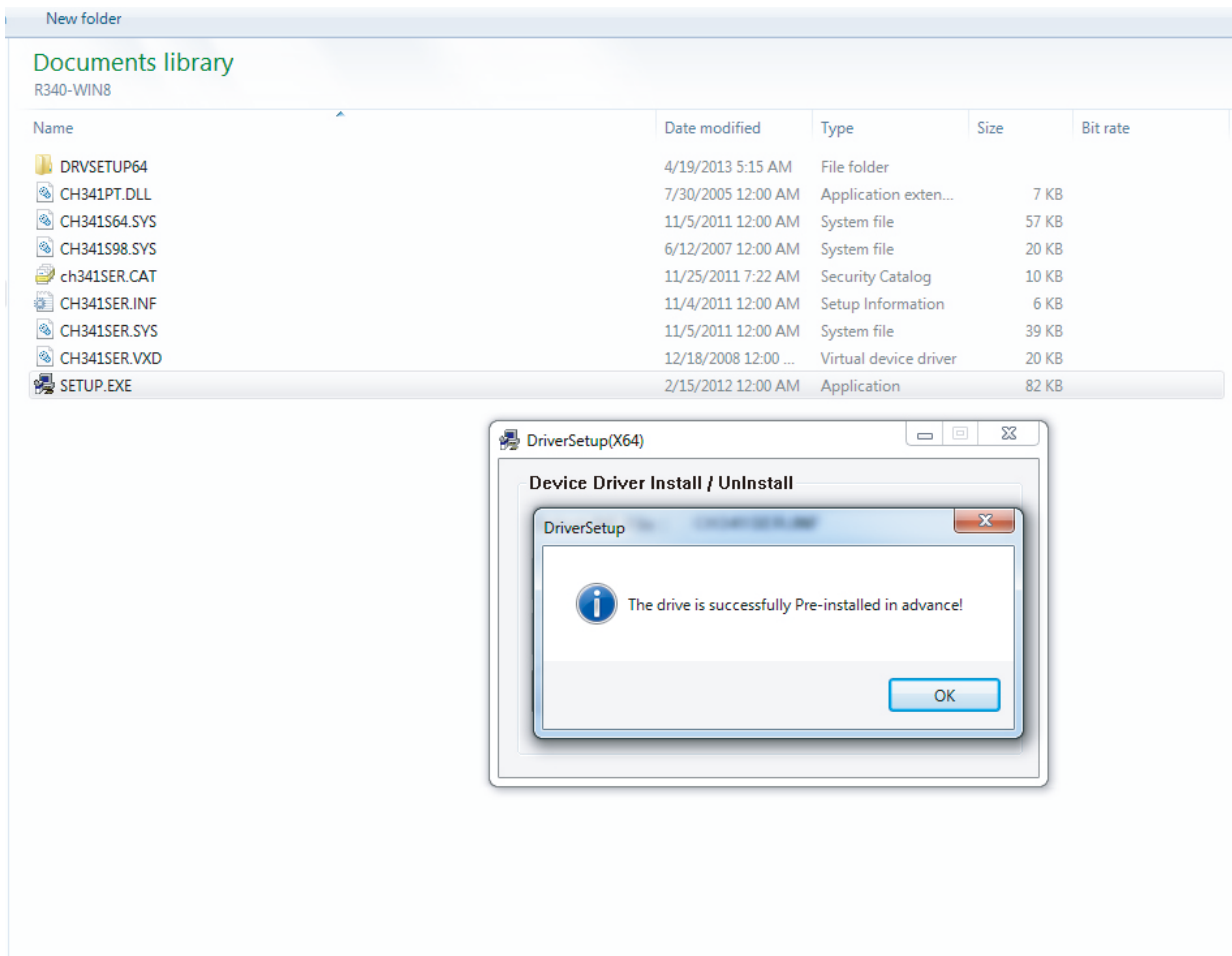
### 3. Select Instal

**Note:** during this installation please connect the device and the devices should be turn on

### 3. Pilih Instal

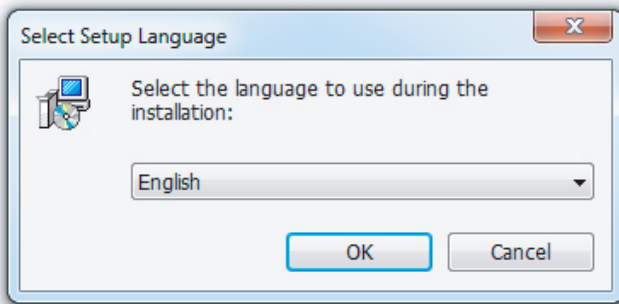
**Note:** selama menginstal bagian ini harap menghubungkan pc dengan vpr-1 dengan keadaan menyala





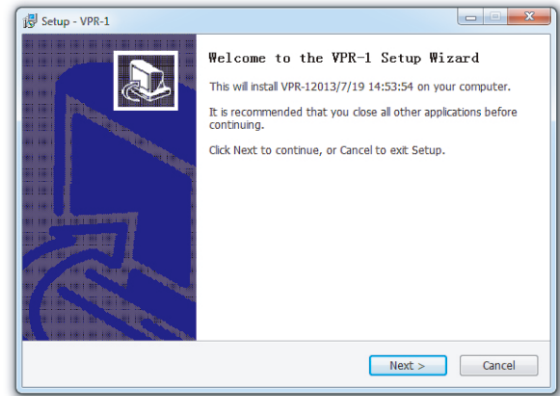
**4. Click Ok To Processd**

**4. Klik Ok Untuk Proses Lebih Lanjut**



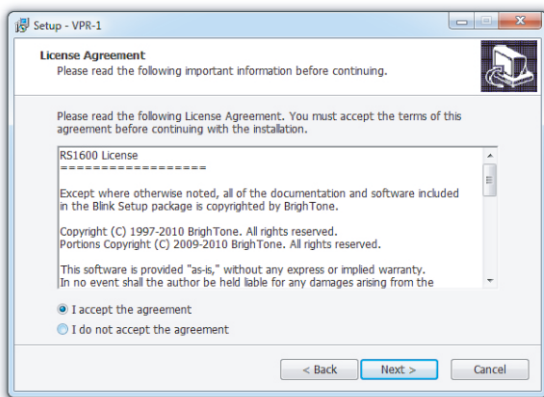
## 5. Select Language

## 5. Pilih Bahasa



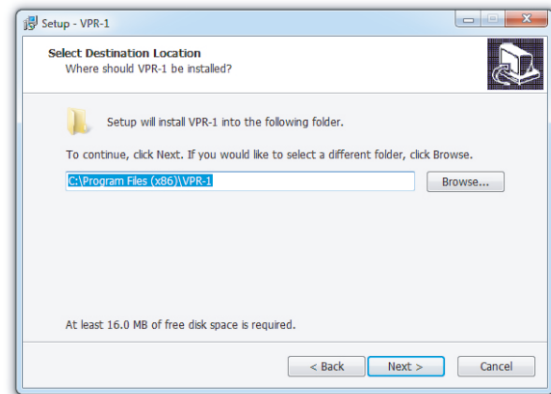
## 6. Click Next To Instal

## 6. Klik Next Untuk Instal



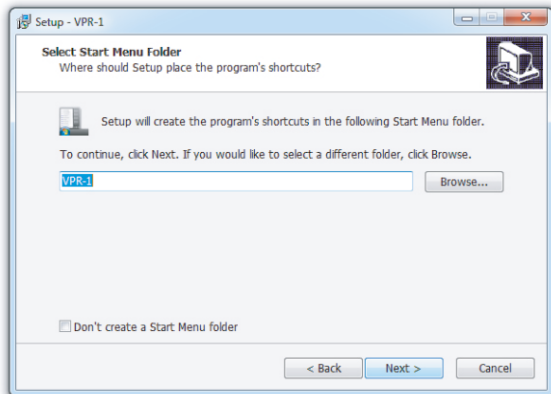
## 7. Click Accept & Next

## 7. Klik Accept & Next



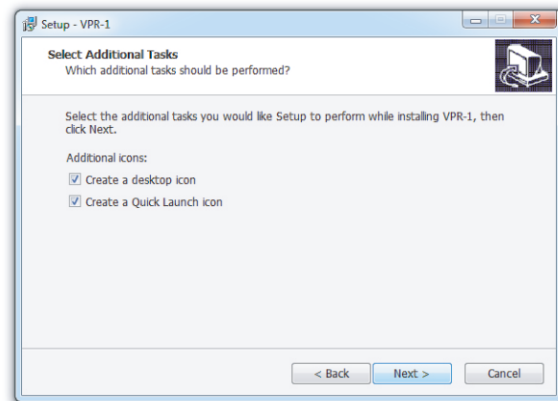
## 8. Select Folder Save

## 8. Pilih Folder Untuk Menyimpan



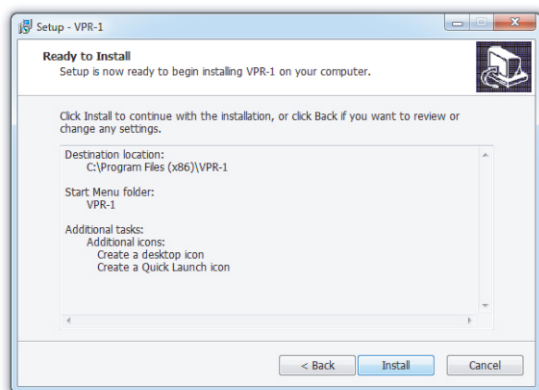
**9. Click NEXT**

**9. Klik NEXT**



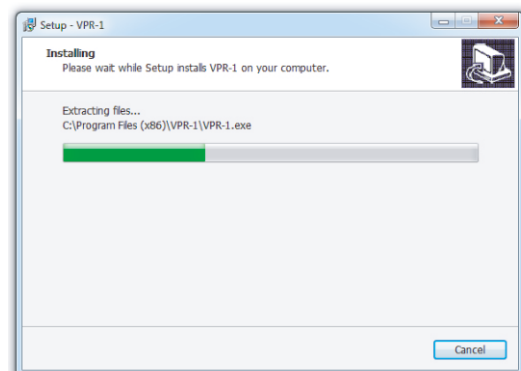
**10. Next To Create Desktop Icon**

**10. Klik Next Untuk Membuat Icon Desktop**



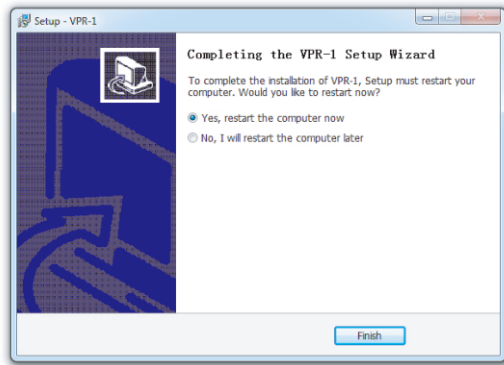
**11. Instal Imediattly**

**11. Menginstal**



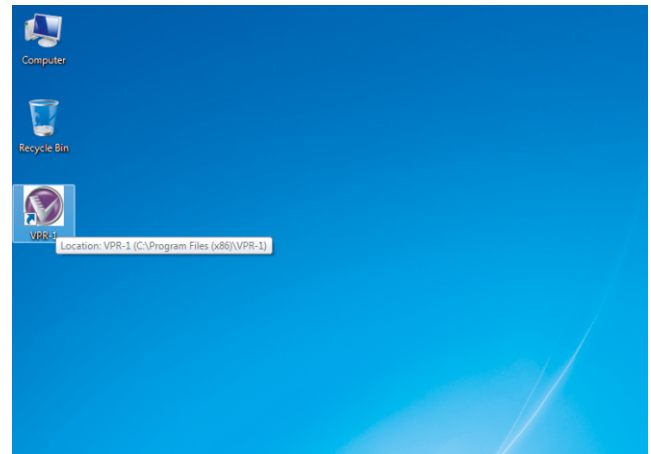
**12. The Programs Installing**

**12. Menginstal Program**



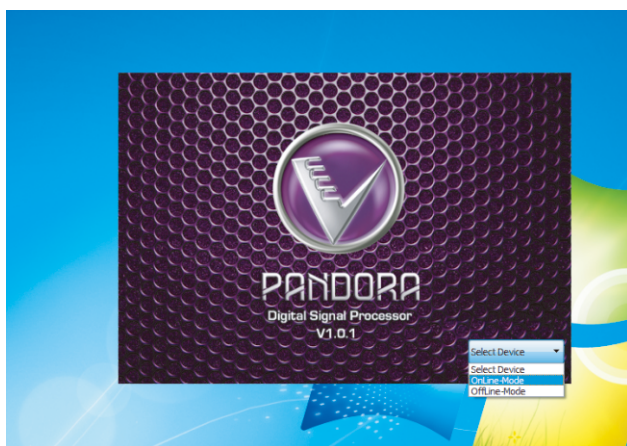
**13. Restart Your Computer**

**13. Restart Komputer Anda**



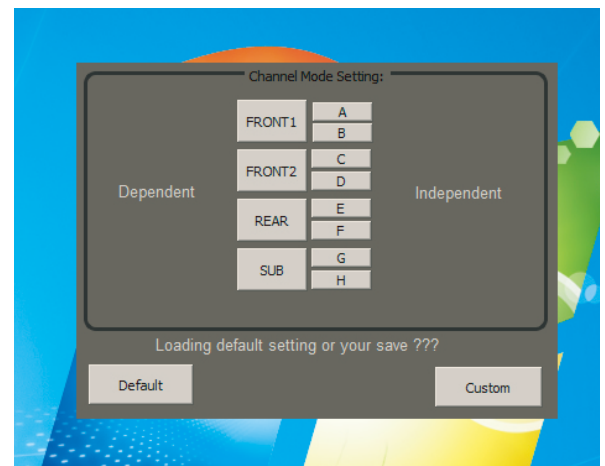
**14. Logo On The Desktop**

**14. Logo Terdapat Pada Desktop**



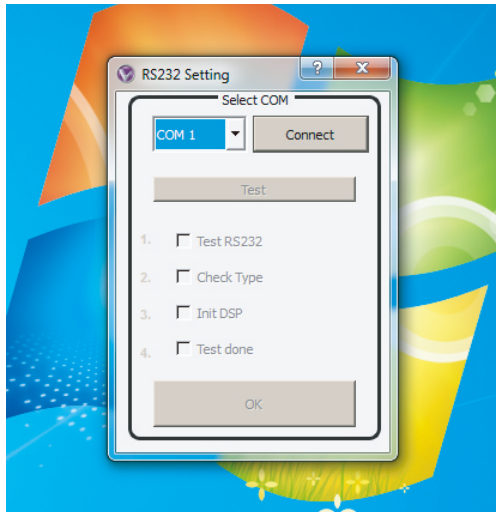
**15. Select Device**

**15. Pilih Perangkat**



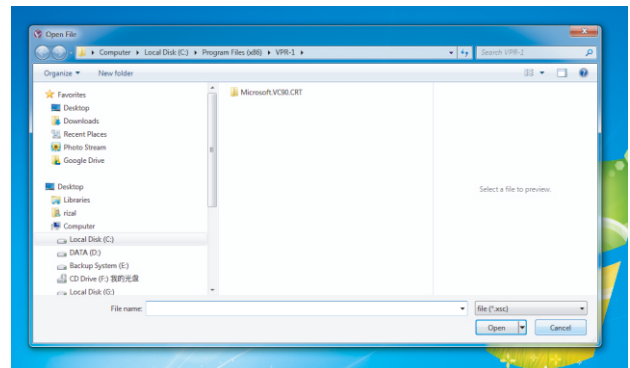
**16. Select Dependent And Independent Mode Press Custom**

**16. Pilih Mode Dependent Dan Independent Klik Custom**



**17. Select Your Com. Check Your Com Port In Device Manager And Conect It With That Com Number**

**17. Pilih Port Com, Untuk Menegetahui Nomor Com Dapat Menegecek Melalaui Device Manager**



**18. If You Have Saved Preset There Will Be In Here , Select The Preset And Open.**

**If You Doesn't Have Click Cancel, The Vpr Screen Will Be Apply.**

**18. Jika Kamu Telah Menyimpan File Preset Akan Terletak Di Folder Ini, Jika Anda Tidak Memiliki Maka Klik Cancel, Jendela VPR Akan Muncul.**

# INSIDE THE DSP

## DIDALAM DSP

To Open Preset

Save Preset to PC

To Reset All Preset to 0

To save Preset to DSP

Select Channel

Select sourcing

Crossover Type

Crossover cutting freq

Reset The EQ

Low Pass

Level Gain per channel

Time Correction with phase 0 - 180°

High Pass

Equalizer

Front 1 / A+B 31 Band

Front 2 / C+D 11 Band

Rear / E+F 11 Band

Sub / G+H 11 Band

## CONTOH JALUR & SKEMA DIAGRAM

